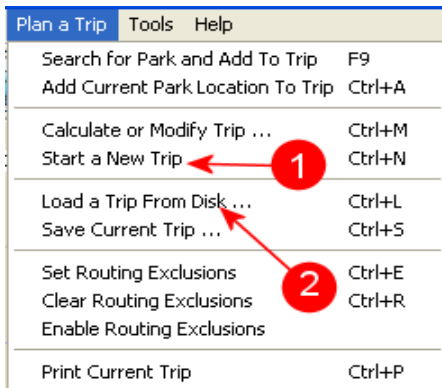


Using the Trip Planner in Trailer Life Directory Campground Navigator 2008 A Step-by-Step Guide


The Trip Planner in Trailer Life Directory Campground Navigator gives you the opportunity to plan a trip, modify it, fine-tune it, etc. There are many different ways to plan a trip and each user will have their preferred way of doing it. However, the basic steps are the same.

1. Specify a starting point for your trip
2. Specify a destination
3. Set any intermediate stop points you may be interested in
4. Set your start date and time and the daily driving times
5. Set any other options to customize your trip (mileage, road preferences, options to avoid tunnels or toll roads,...) and calculate a draft itinerary
6. Review it, add any campgrounds the program may have recommended along the way, make any other adjustments you may want to make to the trip options, and calculate your final itinerary

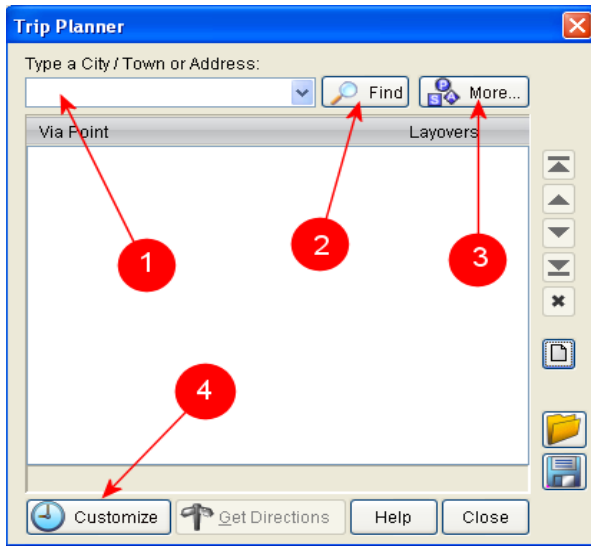
A trip planning session from start to finish is provided below to help you understand the process.



The trip planning process starts with:

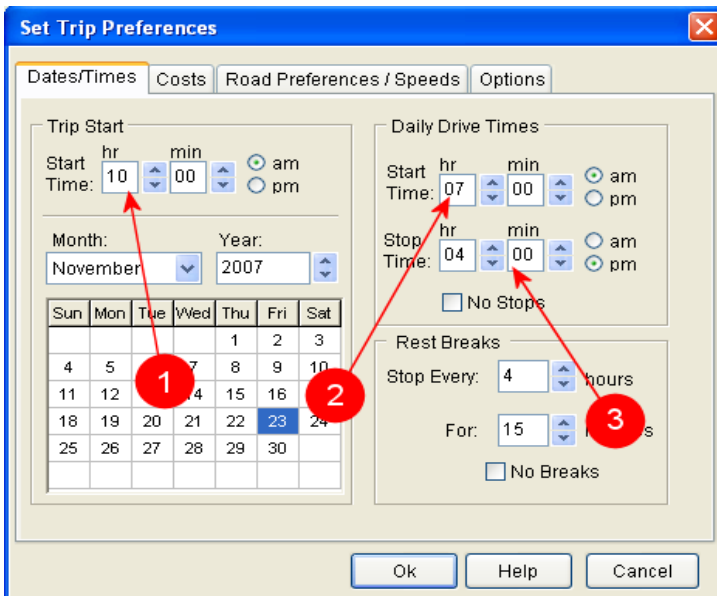
- (a) selecting one of the options from the Plan a Trip menu, like **Start a New Trip (1)** or **Load a Trip from Disk (2)**, or
- (b) or by clicking on the **Plan a Trip** main button 

Once the process is started, the main Trip Planner dialog opens up, ready for you to start planning your trip. In this session, we'll presume that you are starting a new trip, so there are no points in the Trip Planner dialog (if you Loaded an existing trip file, then the dialog would be populated with the points from that trip).



To get started, you need to specify a starting point. You can do that by typing an address, a city, State combination or a Zip Code, that you would be starting your trip from (1), and clicking Find (2) to search for it. Note that a point is not added to the trip until it has been found in the program's database. Also note that the main Search dialog may also be accessed from here by clicking More (3). That would allow you to perform a more flexible search, looking for a campground, Lat/Lon, etc. Before we start adding points to our trip, let's specify the starting date and time as well as the daily driving times. We can do that by clicking Customize (4).

Now, let's change the start of our trip to 10:00 a.m. (1). Furthermore, let's set the daily driving times from 7:00 a.m. (2) to 4:00 p.m. (3). Note that any points that have already been defined will not be affected by the daily start and stop times we specify here.



Only points defined subsequent to these settings will inherit these values.

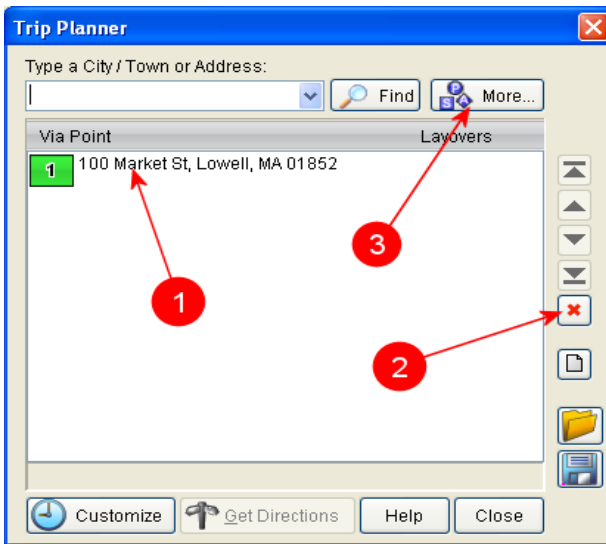
Now click O.K. to close the customize dialog and go back to the Trip Planner dialog. We are ready to start adding the points to our trip by searching for them.

The manner in which search criteria is entered into the Trip Planner is very important to get search results. Some examples of search strings you can enter ...

- 100 Market St, Lowell, MA, 01852
- Chicago, IL
- 10500 SH 56, Five Points, OH
- 1100 10th Pl, Wasco, CA
- 12400 Centreville Creek, Bolton, ON
- 01845

Please, make a note of the commas separating the Street Address, the City and the State. They are required to eliminate ambiguity as to what the user is searching for. Also, note that the Zip Code is not required, when searching for a street address, though it may speed up the searching process if specified.

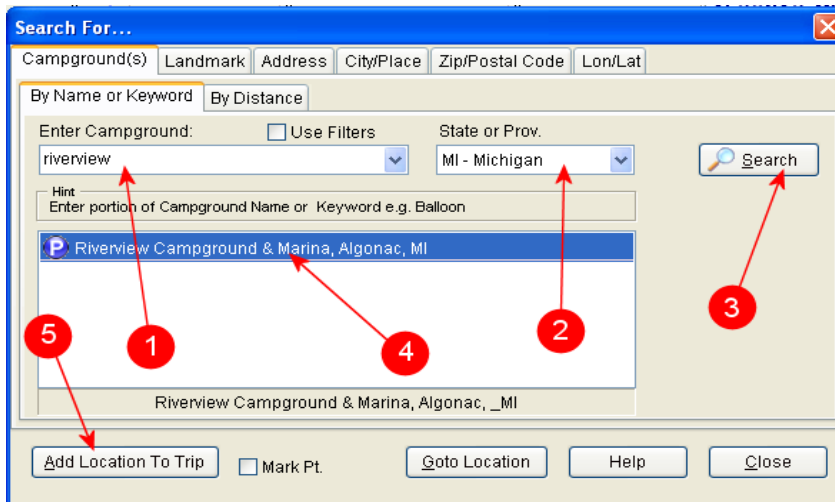
In this simple example, let us use **100 Market St., Lowell, MA** as our starting point (we'll skip the Zip Code). Typing that address and clicking Search we get the following results in the Trip Planner dialog.



Note that the address you typed in was located in the database and was added to the trip points (1) list as point #1, i.e., the starting point of your trip.

If, for some reason you realized that this was not the starting point you actually wanted, you can highlight it, by clicking on it, and then click the Delete button (2) to eliminate it from the trip. Now, let's continue by adding a destination point to our trip. For this example, we'll want to travel to Riverview Campground and Marina in Michigan, so we'll click More (3) to open the main search dialog and search for it.

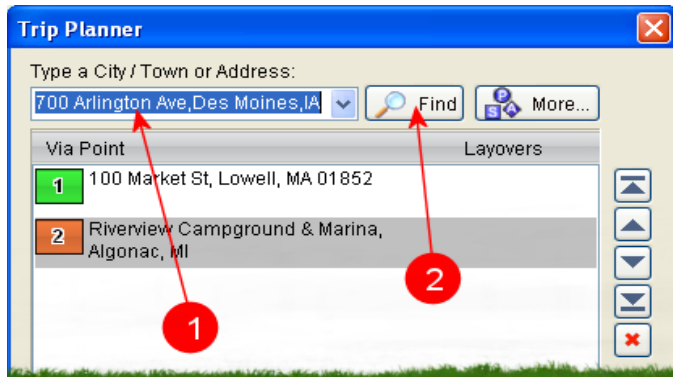
Once the main search dialog opens, let's type riverview (1), select MI from the state selection list (2) and click Search (3). The program will search the database find the



Campground and list it in the dialog (4). Since there is only one campground found meeting the specified criteria, it's also automatically highlighted.

Clicking on Add Location to Trip (5) will add the selected campground to our current trip. Then,

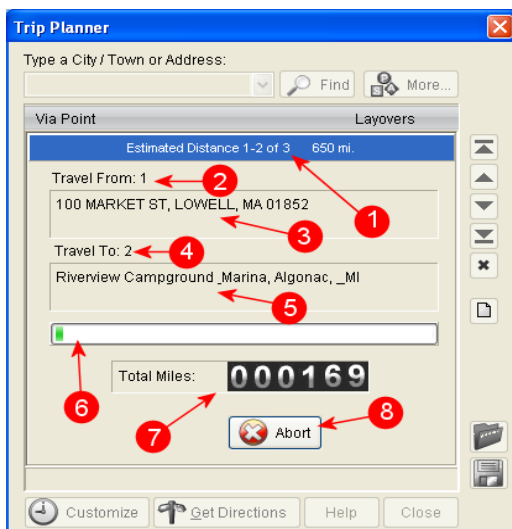
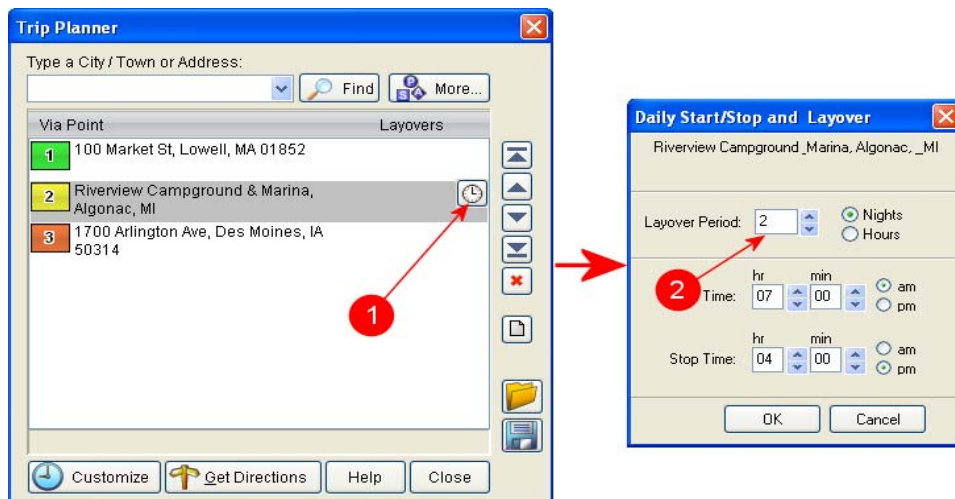
let's click Close to close the main search dialog and go back to the Trip Planner dialog. (Note that although for this example we just added one campground to our trip, we could search for additional campgrounds and add them to our trip as well.)



Now, let's add one more point to our trip. Let's type 1700 Arlington Ave, Des Moines, IA (1) and then click Find (2) to find the address and add it to our trip.

We now have three points for our simple trip, so let's add some custom options before we calculate our itinerary.

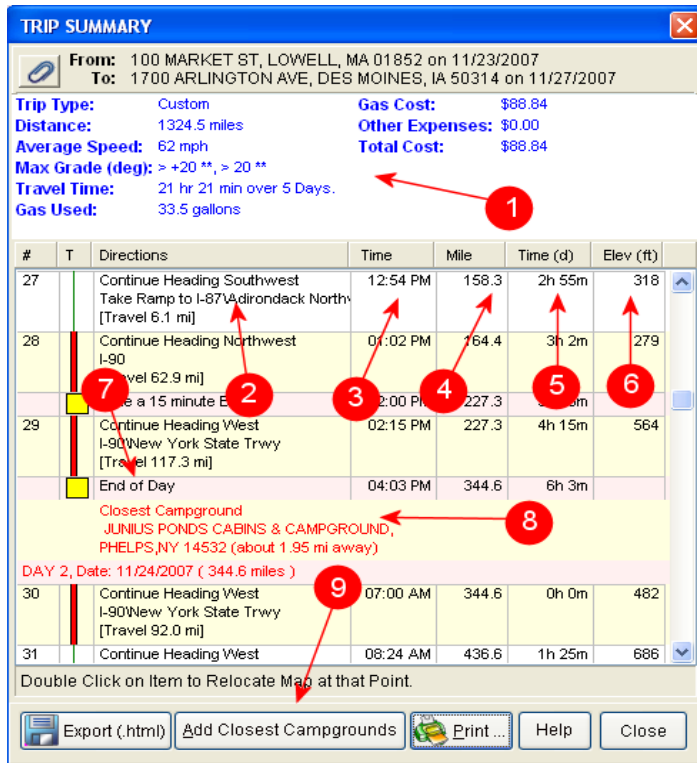
The first thing we want to do is specify the number of nights we want to stay at the Riverview Campground and Marina. When we highlight the second point, a small stopwatch icon appears. Clicking on that icon (1) opens the Layover dialog.



Let's set the Layover period to 2 nights (2) and then click O.K. to return to the Trip Planner dialog, so we can calculate our itinerary, by clicking *Get Directions*. The main Trip Planner dialog is replaced by a progress dialog that displays... The estimated distance between the two points currently being calculated (1), The From (2) and To (4) point numbers currently being calculated, the strings identifying the currently calculating points (3) and (5), a progress bar showing the progress of the trip calculations (6) and a counter keeping track of the trip length in miles (7)

At any point, the user can click **Abort (8)** to stop the current trip calculation.

Once the calculations are completed, a new dialog opens containing the calculated directions for the trip. The section at the top of the dialog **(1)** contains overall trip statistics, like total distance, total time, total cost, average speed, etc. Each row of the detailed directions displays the literal directions **(2)**, the actual time at the beginning of the indicated road segment **(3)**, the distance traveled so far **(4)**, the time of travel **(5)** and the elevation of the current road segment **(6)**.

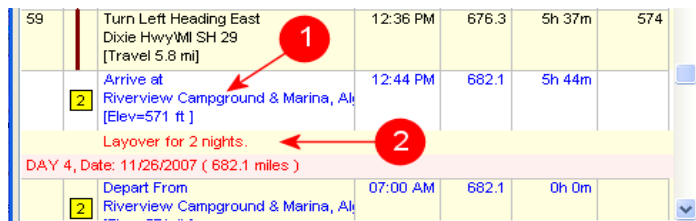


The end of each day of travel is indicated **(7)** and the program identifies the closest campground at the end of each day of travel **(8)**.

The user can chose Add Closest Campgrounds to add these campgrounds to their trip, i.e., confirm that they want to stay at the indicated campground at the end of the day. Note that if the

Campgrounds are added, they automatically assume a one-night layover. In addition to that, the trip needs to be recalculated, since the drive times and trip dates would change.

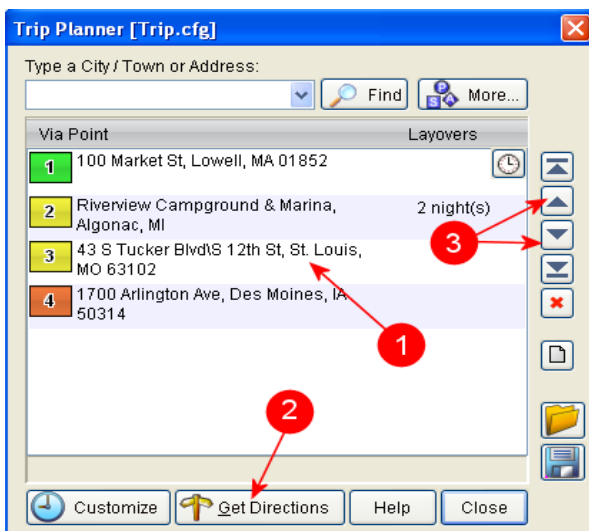
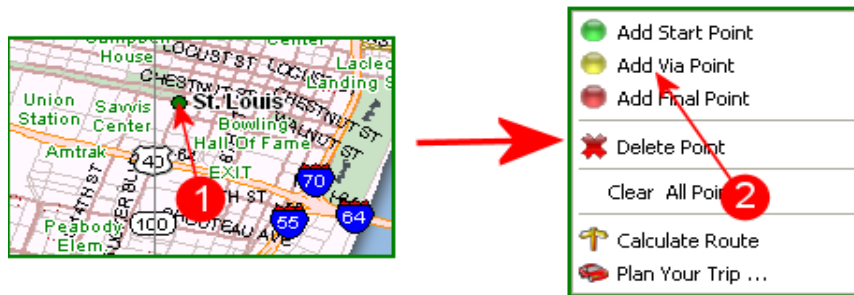
When displaying the information about a user set stop point, like the Riverview Campground, the program also displays the elevation of the that location **(1)** and the length of the overlay specified for that point.



The calculated trip route is also automatically highlighted on the map, with the stop points identified on it.



Now, let's add another stop point to our trip, using the Shift-Click method. We'll add St. Louis, MO. First, let's zoom close in so we can see St. Louis in detail. Then, let's click on the marker identifying St. Louis (1), while holding down the Shift key. A pop-up dialog appears that will allow the user to add the clicked-on point to the current trip, as a start Point, as a stop point or as a via point. In this example, we'll select to add it as a via point (2).



Note that when a point is added using the Shift-Click method, the program attempts to determine where in the sequence of points to geographically place it. In this case, the point was automatically added between Algonac, MI and Des Moines, IA (1).

Of course, if that is not the sequence we wanted to traverse the points in, we could rearrange them by moving points Up/Down using the appropriate keys (3).

Once the new via point is added, let's recalculate the new trip, by clicking Get Directions (2), again. The new directions are calculated and displayed and the new highlighted trip is shown on the map.

